



GERMAN-based company ●●●



TT-FLEX-FBAG-110 110Wp User Manual

www.tommatech.de | mail@tommatech.de

TOMMATECH FOLDABLE SOLAR PANEL

Thank you for selecting easy to install, easy to carry and easy to use TommaTech Foldable Solar Panel. You have selected a high quality and sustainable product. It is recommended that you read these instructions carefully to ensure correct use and durability. TommaTech cannot be held responsible for accidents and injury to persons caused by misuse or incorrect installation.

TECHNICAL SPECIFICATIONS

Model Type	TT-FLEX-FBAG-110 110Wp
Peak Power (P_{max})	110Wp
Power Tolerance	0~+5W
Maximum Power Voltage (V_{mp})	18.84
Maximum Power Current (I_{mp})	5.84
Open Circuit Voltage (V_{oc})	22.80
Short Circuit Current (I_{sc})	6.15
Temp. Coeff. of (P_{max})	-0.29%/°C
Temp. Coeff. of (V_{oc})	-55.68mV/°C
Temp. Coeff. of (I_{sc})	2.9mA/°C
Dimensions (Opened/Closed)(mm)	1265x550x6 / 550x315x24
Weight	4
Maximum System Voltage	1000V DC
Maximum Series Fuse Rating	15A
Protection Class	IP68
Junction Box Cable Length (mm)	600
Connector	MC4
USB Output	QC 3.0 Quick Charge 5V-9V-12V
Exterior of the Product	Fabric

USAGE

STEP 1



Open the Push Clips

STEP 2



Take the holders out of the pocket.

STEP 3



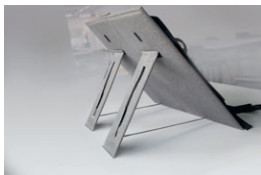
Attach the hook on the holders to the loop on the back of the panel.

STEP 4



Pass the piece of fabric with fastener tape through the eyelet hole in the holder.

STEP 5



You can use the product with maximum efficiency by adjusting the angle with the holder as the position of the sun changes.

STEP 6



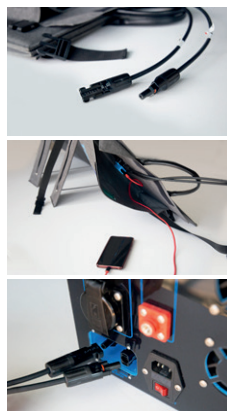
Place the foldable solar panel in direct sunlight.

WARNINGS

- If installing more than one panel, make sure to leave enough space between panels so that the front panels do not shade the rear ones.
- Avoid exposing the panel to partial sunlight or shadows. Partial sunlight can cause hot spots on the panel.
- Make sure the solar panel is fully opened while using it.
- Do not place objects on it as this may damage the panel and void the warranty. Sharp or heavy objects falling on the module may cause the cells to break.
- The panel must not be placed on sharp or pointed objects.
- The panel must not be dropped, punctured or bent.
- Do not step or sit on the panel.
- The panel should be folded and stored when not in use.
- The panel is designed to withstand splashes of water but is not completely waterproof. The panel should not be left in the rain.
- Do not attempt to disassemble the panel or remove components. This will void the warranty.

USAGE

1. To charge smartphones, tablets and other USB-enabled devices, connect the device to the solar panel's USB port using a USB charging cable. The built-in USB output is designed to support 5V/9V/12V and QC 3.0 charging technology to provide users with power for electronic devices such as cell phones. Your electronic devices will automatically compensate for the maximum charging current and voltage. If your device does not support fast charging, the panel outputs 5V.
2. You can connect the MC4 solar cables on the panel to the external power station. You can connect the panels in series or parallel depending on the specifications of the power station you are using. For detailed information you can find the TommaTech power station user manual.
3. To charge the battery, first connect the terminals of the charge controller to the battery connection terminals. Then connect the MC4 cables from the panel to the charge controller. Finally, after setting the charging parameters on the charge controller accordingly, your battery will start charging.



WARRANTY COVER

A) 2 years (24 months) product warranty is given.

The warranty period starts from the date on which the sales invoice is issued to the customer. The warranty term of the product is 2 years (24 months).

B) Warranty Exclusions

1. Providing/adding additional PV Modules or replacing or repairing the PV Module does not extend the specified warranty period and does not provide a replacement warranty period.
2. The following matters, whether or not they occur during the warranty period, will not be covered by the limited warranty terms set forth for PV Modules. The warranties for TommaTech flexible panels do not apply to modules subjected to the following conditions:
 - Problems, defects and malfunctions arising from improper or incorrect use, user errors and damages caused negligently or intentionally
 - Problems, defects and malfunctions arising from the assembly, installation or application of PV Modules and other materials, equipment and devices
 - Problems, defects and malfunctions caused by alteration, maintenance, operation or modification and improper installation, assembly and applications
 - Problems, defects and malfunctions caused by installations and applications not in accordance with the manufacturer's instructions, user manuals and labels on the PV modules
 - Problems, defects and malfunctions caused by transportation and storage of PV Modules under inappropriate conditions
 - Problems, defects and malfunctions that occur due to the installation location and region not being suitable for the characteristics of the PV Module,
 - Problems, defects and malfunctions caused by the removal of the PV Module, its mechanism, installation, part or equipment.



TommaTech GmbH

Bürgerplatz 5 - 85748 Garching b. München / Germany
Phone: +49 89 1250 36 860
E-mail: info@tommatech.de