



CLOUD

TommaTech Dishwasher

Application Quick Setup Guide

## 1. Download the app

Download the **TommaTech Cloud** app from the **Google Play Store** or **App Store**. Alternatively, you can download it by clicking the download buttons below.

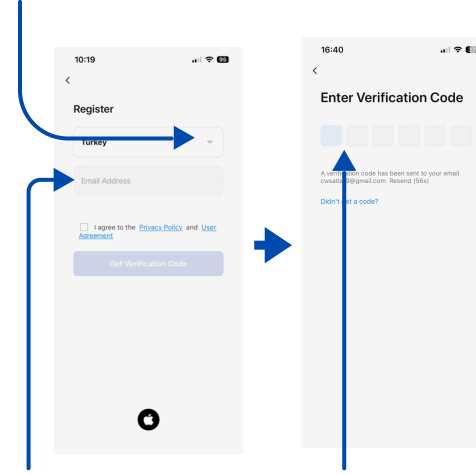


Press Buttons



## 2. Account Registration

Select Country



Enter your email address

Enter the Verification Code

## 3. WiFi Connection (Step 1)

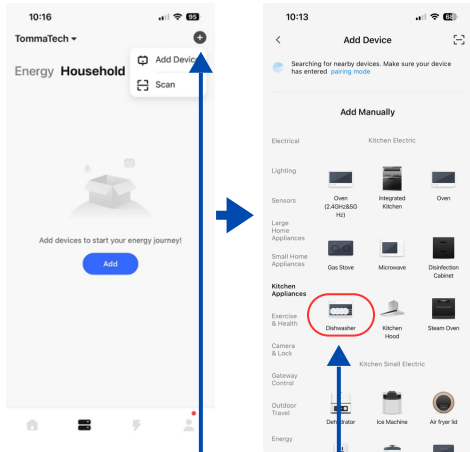


Press and hold the buttons listed above for 3 seconds. The Wi-Fi icon on the screen panel will flash. Open the app to connect.



You should see the Wi-Fi icon on the device's screen.

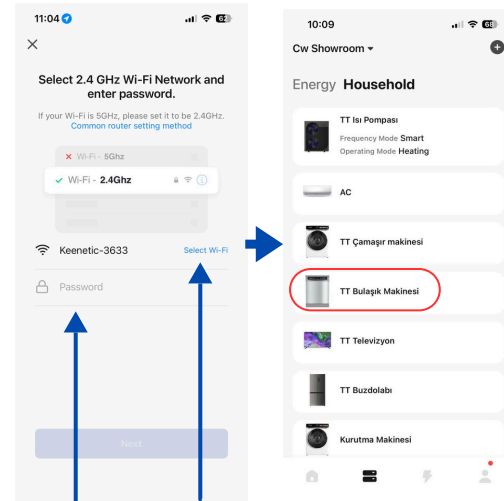
## 4. WiFi Connection (Step 2)



Sağ köşedeki '+'a tıklayın, ardından "Add Device" a tıklayın.

Cihaz listesinden cihazınızı seçebilirsiniz.

## 5. Device Interface



Wi-Fi Şifrenizi Girin

Wi-Fi Ağınızı Seçin

Cihazınız başarılı bir şekilde eklendiyse **Evsel Cihaz** bölümünden erişebilirsiniz

## 6. Device Interface



Back

Device Current Status

Device power on/off

Energy Consumption Analysis

Settings

For more information, you can access detailed device settings.